

# Welcome to St Paul's Catholic Primary School



**Together in Faith**  
*Working as One*

**Farmfield Drive  
Beechwood  
Prenton  
Wirral CH43 7TE**



# Our Staff



## Headteacher

**Mrs Fenna**

## Deputy Headteacher

**Mrs McNulty**

## Teachers

**Mrs Finlay, Miss Newton, Mrs Bryan Mr Harris, Mrs MacKenzie,  
Miss Saxton,**

## Teaching Assistants

**Mrs Anson, Mrs Stormont, Mrs Bentley, Miss Stringer, Miss Head,  
Miss Aspinall**

## Mid-day Assistants

**Mrs O'Neill, Mrs Jones, Mrs Platt, Miss O'Callaghan**

**Cleaner: Mrs Platt, Mrs Haughey**

**Caretaker: Mr McDowell**

**School Business Manager: Mrs G Kearns**

**School Secretary: Miss Rooney**

**8 O'Clock Club Club: Miss Head, Miss Rooney**

## School Governors

**Foundation Governors (appointed by the Diocese of Shrewsbury)  
Mr O'Connell (Chair), Mrs Corvers (Vice Chair), Mr Brown, Mrs Close,  
Mr Polachowski, Fr McGovern**

**Teacher Governor: Mrs Finlay**

**Staff Governor: Mrs Kearns**

**Parent Governor: (Vacancy)**

**Local Authority Governor: Mrs Cook**

**The Headteacher is also a Governor**

**Parish Priest: Fr McGovern, Our Lady's Presbytery,  
Cavendish Street, Birkenhead CH41 8AQ  
0151 652 1074**

# What Our School is Like

## Our Mission Statement

This was drawn up by children, parents, governors and staff working together over several months with the children deciding the final wording:

### **Together in Faith, Working as One**

We think it really reflects what we aim for and how we try to achieve this.

### **About us**

We are a small, caring, school for children from two to eleven years where our children learn to live as part of a Christian community. We therefore especially value our close links to our church, parish, and the wider Beechwood community. In all this, we are inspired by the Gospel values of love for God, our neighbours and ourselves and by the example Jesus gave us of how to live fully as His children.

We aim to:

- ♦ value all our children as individuals
- ♦ be as inclusive as possible
- ♦ work in partnership with parents, the most important people in children's lives
- ♦ provide an environment in which all our children are safe, happy and healthy, and in which they can fulfil their educational potential, become good citizens and contribute to their society.
- ♦ treat all children, parents and staff as equals, whatever their circumstances

### **Equal opportunities**

We believe that everyone is equal in the eyes of God and that we have an absolute duty to ensure that we create a school environment where this belief becomes reality. This means we:

- ♦ are vigilant about racial abuse and bullying of any kind, addressing gender imbalances
- ♦ support children who have learning or behavioural difficulties which prevent them realising their full potential.
- ♦ welcome children with disabilities of whatever kind and make every effort to facilitate their access to the National Curriculum.



# Joining Our School

The school's admission policy for both Nursery and main school complies with legal and diocesan requirements. Any child may be admitted but if there is a shortage of suitable places, the order in which children will be admitted is as follows:

**Looked After Children and previously Looked After Children**  
**Children who have a sibling in the school at the time of admission**  
**Baptised Catholic children resident in the parish of St Paul's**  
**Baptised Catholic children from other parishes**  
**Other children whose parents wish them to have a Catholic Education.**

**Within all categories the Governors will give preference to Catholic children**

**Children can be admitted at any age but usually come to us at three years (Nursery) or five years (for the main school). We have also recently opened our Pre-School Twos Room for funded two year olds.**

**There are separate admission procedures for children joining the Pre-School Twos, F1 and the main school and admission forms have to be completed for all.**

**Nursery: Children are admitted to the Nursery after their third birthday but younger children can be put on the waiting list at any time. Admission forms for the Nursery can be obtained from the school office or from the rack in the school foyer.**

## **Main school**

**Admission forms for children joining the school at five years can be obtained from the school or from The Children's and Young Persons Department, Hamilton Building, Conway Street, Birkenhead CH41 4FD.**

**Parents of children transferring from another school need to complete a Transfer Form and send it to CYPD at the address above. It is usual to first informally discuss the transfer with the school the child has been attending and with us to make sure we have a place.**

**Parents and carers thinking of sending their child to St Paul's are warmly invited to visit the school.**

# School Life

If you are thinking of sending your child here, there are a number of things about us you will want to know.

## **Our Journey in Faith**

**We believe that:**

- ♦ all children, whatever their parents' belief or religious practice, must find their own way of developing a relationship with God
- ♦ our role is to provide the experiences and support which will fulfil individual children's needs
- ♦ experiencing a worshipping community in school is an essential part of that journey

Participation in the Church's liturgy is therefore an important feature of school life. The children take turns to help organise class Masses in the adjoining church, the parish priest, Fr Philip often visits the school and our parish sister, Sister Pauline, and the parish catechists help parents and staff to prepare the children for the First Sacraments.

Daily acts of collective worship play an important part in developing children's spirituality in line with their understanding of their world. The Friday assembly is particularly enjoyable and is open both to the many parents who attend and to those considering sending their children to the school.

The teaching of religion in school is based on 'The Way, The Truth and The Life' programme. Every child belongs to a Pastoral Care Group where they meet weekly with children from across the school to look at many issues linked to PSHE. Personal and social education, including sex education, is based on the principles of the WTL programme. Children are gradually introduced to the idea of the growth of the whole person in line with their own spiritual, physical, emotional and moral development. Teaching of the biology of puberty is given in the sixth year by the school nurse, working in conjunction with the Class Teacher and in full consultation with parents.



Diocese of Shrewsbury

# Our School Day

**We begin school at 8.55 a.m. and finish at 3.15 p.m.**

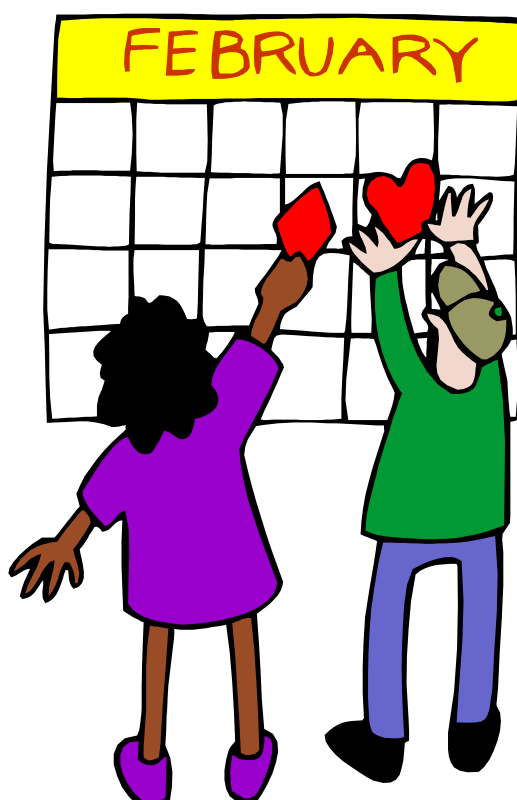
**For those children who wish to come earlier there is the popular 8 O'Clock Club from 8.a.m.to 8.55 a.m. The school office will tell you how to apply for a place. For a small fee, the Club provides a healthy breakfast and a range of enjoyable activities.**

**There are also a number of After School Clubs, including an extremely popular Film Club for which there is a small charge which goes towards school funds.**

**We believe that children do best in an atmosphere of stability and loving discipline so we emphasise the importance of:**

- regular attendance**
- punctuality**
- the wearing of school uniform**

**Details of the procedures for all these, and of our behaviour policy and procedures, can be obtained from the school office.**





# **Your Child's Progress**

## **How our children learn**

**In order to ensure our children make as much progress as possible we:**

- ♦ **plan carefully and tailor our plans to individual needs**
- ♦ **use ideas which we know will interest the children**
- ♦ **try to present these in different ways so as to meet individual learning styles**

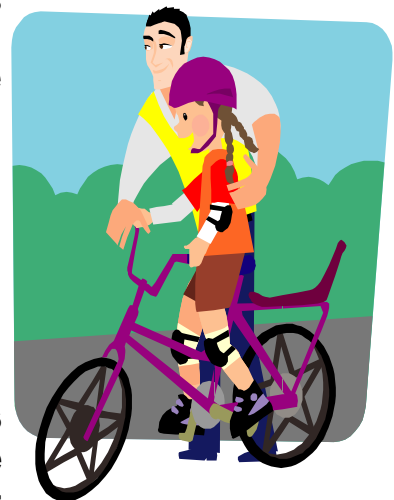
**If teachers feel that a child is not fulfilling his or her potential, they may look for a more suitable approach tailored to the child or arrange for some extra individual or group help.**

**For more persistent delays in learning, or for problems with behaviour, the school may call on specialist help provided by the Local Authority. This will always involve consultation with the Headteacher and with the child's parents. Sometimes a special temporary learning programme for the child is drawn up, again always with the parent's and Headteacher's involvement.**

**We also know that children don't learn just through what they do in class. We aim to give our children first hand experiences and so have leased a mini bus, the use of which is very successful in bringing learning alive for our pupils. We have a well equipped hall for physical education and good outside facilities. As well as using these for Curriculum provision, our other learning opportunities include:**

- ♦ **a number of varied sports and dance activities after school**
- ♦ **two plays every year in which every child participates**
- ♦ **visits to places of interest, museums and theatres**
- ♦ **fund raising activities for charities**

**We also have an active successful Schools Council. And we do some things just for fun--like our Community Summer Fair and Easter Bonnet Parade.**



# **Your Child's Progress**

## **Assessment and reporting**

**We are very aware of the need to:**

**assess children carefully  
record progress and any difficulties  
communicate our findings to parents**

**You have a right to know about your child's progress in school which we encourage you to exercise.**

**Progress is reported in several ways:**

- ♦ **informally, usually by the class teacher**
- ♦ **more formally, through open evenings where parents can meet**
- ♦ **formally through written reports which are sent home**

**Parents are warmly invited to contact either the class teacher or the Headteacher if they have any concerns about their child. Equally, if we have concerns about any aspects of your child's progress, general well being or personal safety, we will contact you immediately.**





# Partnership



## **Partnership with parents**

**Parents are the first and most important educators of their children and we value highly, and depend on, the learning that they have provided for their children before they come to school and the support they give them afterwards.**

**But we also know that bringing up and educating children is not something you can do on your own. We therefore aim to work in partnership with you at all times. So, we:**

- ♦ **run a number of very well attended courses to support you. These include some which:**
- ♦ **help you in developing good relationships with your children**
- ♦ **show you how you can help your children with language, literacy and homework.**

# Our School Day

## **Class organisation**

Within school, children are grouped in four classes, each covering two age groups. This ensures stability for the children and the opportunity for staff to get to know children well and provide a tailored curriculum.

Our staff know all the children in the school very well and there is a high level of communication between staff. Each class is supported for at least some of each day by additional trained support staff, ensuring that individual needs are met.

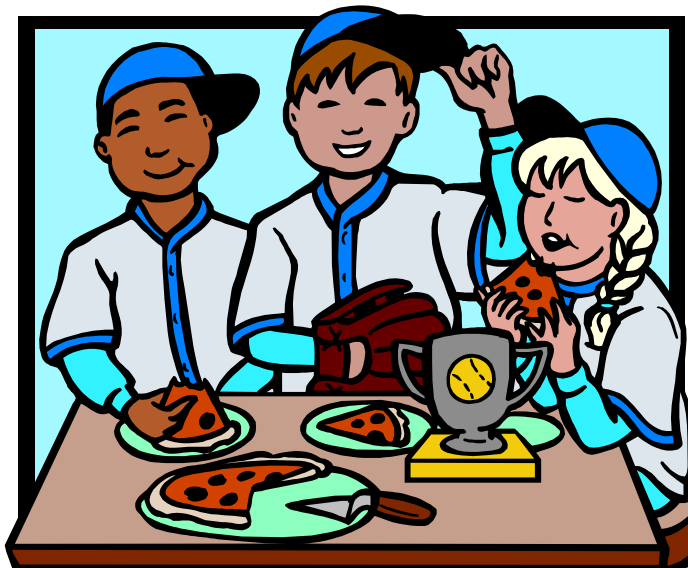
We make full use of modern IT equipment. Every class has an interactive whiteboard and all the children have access to laptops.

Lunchtime is supervised by dinner supervisors who receive special training from the school.

## **Extra support**

There is also a specially trained teacher who advises staff on working with children with particular needs. The school is in constant contact with a number of support agencies who provide additional support both to children and their families.

Wherever possible, we try to ensure that our children are taught and cared for by someone they already know but it is sometimes necessary to call in staff from outside the school to cover staff absences. These staff are always qualified and cleared through the safeguarding children procedures.



# The Wider World

We value the importance of enjoyment and experience in children's learning and classroom teaching is supported by visits to places of interest, museums and theatres and by visits to the school by practising artists and drama groups.



We are very fortunate in having close links with our main destination secondary schools (St Mary's, Wallasey, Upton Hall and St Anselm's). Their staff and students come into the school to work with our children who particularly enjoy the Advent and Lenten Retreat Days organised by St Mary's Sixth Form students.



# Further Information

There is a detailed handbook of information for parents which can be consulted at the school office where you can also obtain copies of guidance on school behaviour procedures, more detailed timetables and guidance on school uniform.

Also available from the school office are all school policies, including those for children with special educational and behavioural needs, arrangements for giving access to children with disabilities, the school's accessibility plan, our arrangements for safeguarding children, and the latest Diocesan Religious Education and OFSTED Inspection Reports. The OFSTED report can also be read on the OFSTED website where you should follow the North West and Wirral links.



**Telephone: 0151 652 7828**

**Fax: 0151 653 9052**

**email: [schooloffice@stpauls.wirral.sch.uk](mailto:schooloffice@stpauls.wirral.sch.uk)**